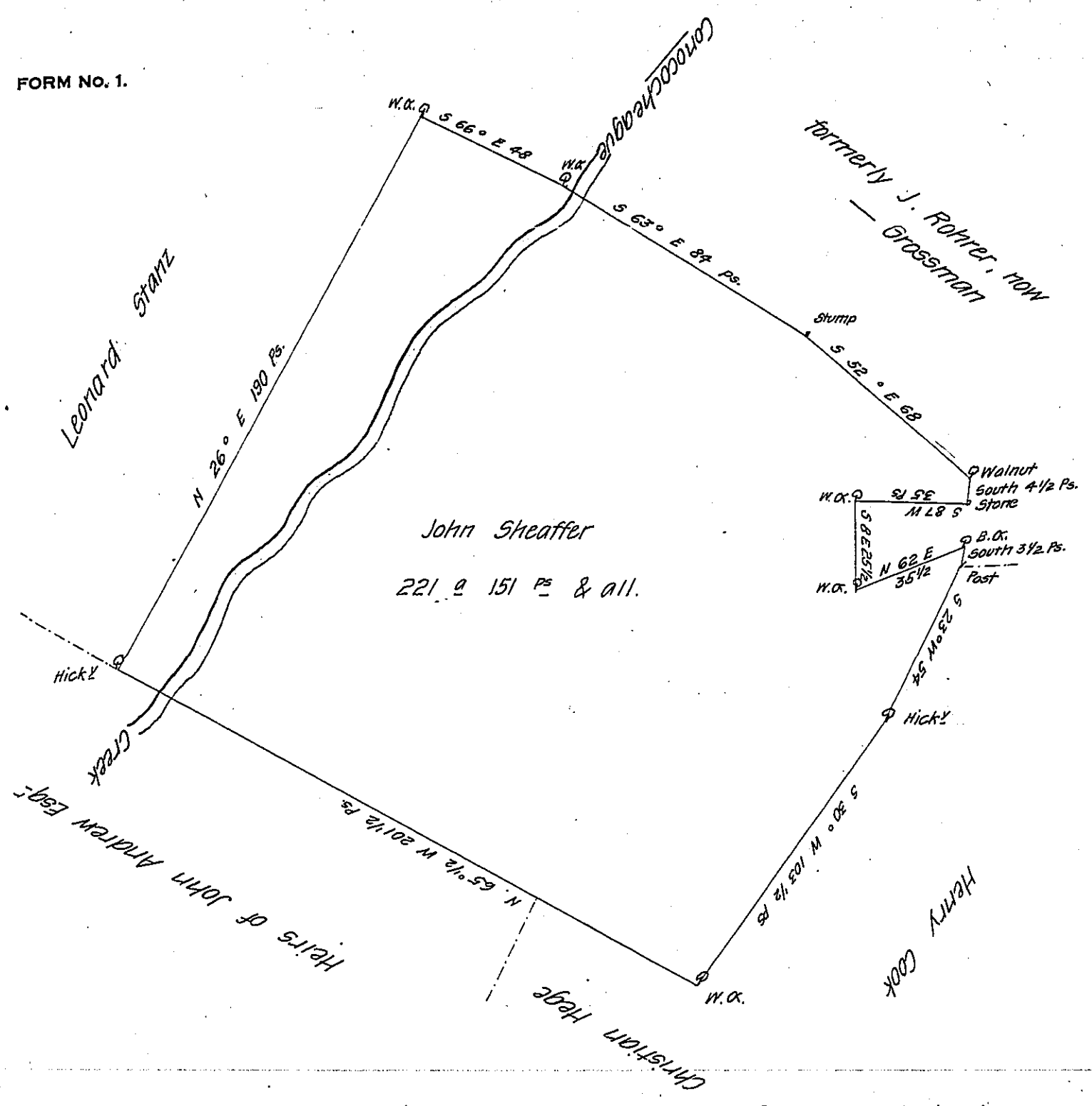


FORM NO. 1.



The above described tract of Land situate in Guilford and Hamilton Townships, Franklin County, containing Two hundred & twenty one acres one hundred & fifty ^{one} perches & allowance of Six P. Cent. for roads was surveyed the 10th day of May 1805 in pursuance of a Warrant granted to John Sheaffer bearing date the 15th day of January 1802

P-

Thos. Kirby D.S.

To Samuel Cochran Esq.

Surveyor Genl. of Pennsylvania

IN TESTIMONY that the above is a copy of the original remaining on file in the Department of Internal Affairs of Pennsylvania, made conformably to an Act of Assembly approved the 16th day of February 1833, I have hereunto set my hand and caused the Seal of said Department to be affixed at Harrisburg, this ninth day of January 1907

Loach D. Perry
 Secretary of Internal Affairs.